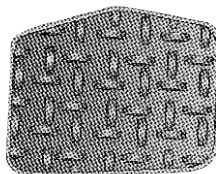


**STATE OF THE ART
PRECISION CAST ORTHODONTIC BRACKETS**

QUICK REFERENCE BRACKET VALUES

	TORQUE	ANG.	(mm) WIDTH
MAX CENTRAL	+12	+5	3.9
	+22	+5	3.9
	+17	+4	3.9
MAX LATERAL	+8	+9	3.0
	+14	+9	3.0
	+10	+8	3.0
MAX CUSPID	0	+11	3.5
	+7	+10	3.5
	+7	+5	3.5
	-7	+8	3.4
	0	+8	3.4
MAX BICUSPID	-7	0	3.0
	0	0	3.0
	-7	0	3.2
MAND ANTERIOR	0	0	2.5
	-6	0	2.5
MAND CUSPID	-11	+5	3.0
	+7	+5	3.5
	0	+3	3.2
	-6	+3	3.2
MAND 1st BI	-17	0	3.0
	0	0	3.0
	-12	+2	3.2
MAND 2nd BI	-22	0	3.0
	0	0	3.0
	-17	0	3.0



- ◆ Generous tie wing areas for easy, effective ligation.
- ◆ Precise and uniform slot tolerances provide consistent, predictable and reliable results.
- ◆ .030 deep arch slots in all Orion brackets for improved torque control.
- ◆ Sectional and utility archwires may be used in combination with primary archwire.
- ◆ All Orion brackets are color coded and permanent marked for proper identification and placement.
- ◆ 80 gauge foil mesh pads provide deeper undercuts than conventional mesh pads for greater bond strength.
- ◆ Optional .020 x.020 Vertical Slot accommodates virtually all auxiliaries.
- ◆ Curved bracket bases coupled with linear bracket slots allow full archwire and bracket slot engagement, thereby enhancing sliding mechanics, especially in the posterior segments.
- ◆ Torque-in-base for level slot line up in final treatment phase.
- ◆ Molded compound/contour base designs fasten tightly to all tooth surfaces without base “rocking.” As a result, both bond strength and bracket expression are highly effective.
- ◆ Choose from several appliance specifications that meet your treatment objectives.
- ◆ Orion is also offered in 24K gold for aesthetics.

